

## PROTITE Chemical Anchor

Polyester SF RESIN  
Styrene Free



CARTRIDGE SIZE

300ml



A two component chemical anchoring injection system. A formulation derived from polyester resin with high bond strength, developed principally to anchor threaded rods into concrete, and for masonry and hollow wall installations. Used widely for medium loads in both horizontal and vertical applications.

### CHARACTERISTICS

- Suitable for medium loads for non-critical applications.
- Fast working times for early loading in time sensitive applications.
- No styrene allows for use indoors and in enclosed spaces.
- Use in damp & wet environments and fixing holes.
- Extremely versatile in masonry, hollow, aerated concrete.
- Crack and gap filling repairs in concrete vertical or horizontal.

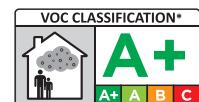
### APPROVALS / CERTIFICATIONS / TESTING

- 17/0043 - ETA Option 7 Non-Cracked Concrete. Includes flooded holes.
- CE Certified 1404-CPR-2837 - ZAG, Solvenia.
- ITB Approval (Poland) 0978/W
- LEED tested 2009 EQ c4.1 SCAQMD rule 1168 (2005.)
- VOC A+ Rating (Volatile Organic Content)



### PHYSICAL PROPERTIES

- Mixed Colour - Grey
- Density - 1.71 kg/m<sup>3</sup>
- Compressive Strength - 43.5 N/mm<sup>2</sup> (EN ISO 604)



### TYPICAL TENSILE PERFORMANCE - STANDARD EMBEDMENT DEPTH

Concrete, C20/25, 5.8 Grade Studding						
Size	Recommended Load		Spacing ( $S_{cr,N}$ ) (mm)	Drill Hole Ø (mm)	Fixing Hole Ø (mm)	Setting Depth (mm)
	Tension ( $N_{rec}$ )	Shear ( $V_{rec}$ )				
M8	6.93	5.14	160	10	9	80
M10	8.70	8.57	200	12	12	90
M12	12.00	12.00	240	14	14	110
M16	17.25	22.29	320	18	18	125
M20	27.23	34.86	400	24	22	170
M24	34.03	50.29	450	28	26	210
M30	47.12	81.43	520	35	32	280

Version 10.10.16

## PROTITE Chemical Anchor

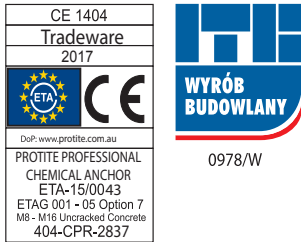
Polyester SF RESIN  
Styrene Free

• WORKING AND HARDENING TIMES

Base Material Temperature	-10°C**	-5°C**	5°C	15°C	25°C	35°C
Gel Working Time	50'	40'	20'	9'	5'	3'
Curing Time Dry Concrete	240'	180'	90'	60'	30'	20'
Curing Time Wet Concrete	x 2	x 2	x 2	x 2	x 2	x 2

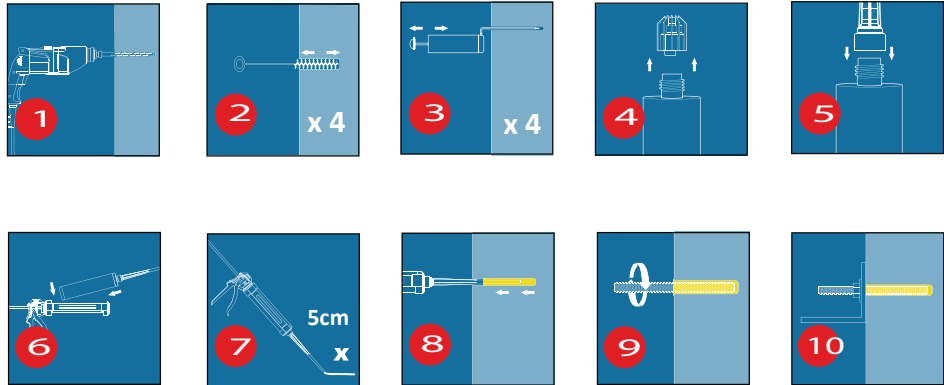
\*\*Resin Temperature must be at least 20°C

• APPROVALS

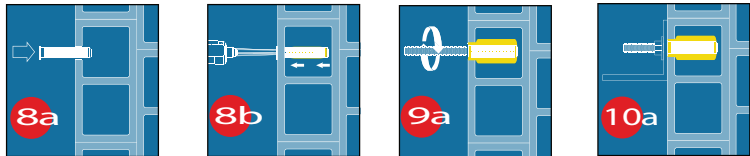


• INSTALLATION

Solid substrates



Hollow wall



For further information please refer to the Technical Data Sheet in the website customer area, or by request.

• STORAGE / SHELF

This product should be stored between +5°C & +25°C.

Avoid Direct Sunlight

The Shelf life of the product is 18 months from the manufacture date.